

Alliance All-Makes Glass by Duncan Systems, Inc.

The Alliance All-Makes Windshield offers you a great value for your dollar. The product line includes models from most major manufacturers of Class 6-8 commercial trucks.



FEATURES & BENEFITS

- Products meet or exceed all D.O.T. requirements of FMVSS 205 and ANSI Z26.1
- Superior packaging for LTL and Air Shipments
- Competitive pricing for aftermarket replacement glass
- Glass packaged in single piece, 4-piece bulk, and 30-piece crates

PRODUCT AVAILABILITY

To locate your nearest dealer, please visit www.freightliner.com.

ADDITIONAL INFORMATION

To learn more about Alliance parts, please visit www.alliancebrandparts.com.

PART NUMBERS

Alliance Part Number	Make	Model	Year	Approximate Size (H X W)	Description
ABP/N60B-DL4746	FTL	FLD, FLC, Classic XL	1989+	20" X 34"	RH/LH flat windshield
ABP/N60B-DW1302	FTL	Century, Columbia, Coronado	1996+	30" X 42"	Passenger side or RH curved windshield
ABP/N60B-DW1303	FTL	Century, Columbia, Coronado	1996+	30" X 42"	Driver side or LH curved windshield
ABP/N60B-DW1254	Sterling	Acterra, A/AT, Silverstar, L Series	1996+	27" X 71"	One-piece curved windshield
ABP/N60B-DW1439	FTL/Sterling	Condor	2001+	37" X 45"	RH/LH curved windshield
ABP/N60B-DW997	FTL/Sterling	Cargo Cabover	1986+	33" X 76"	One-piece curved windshield
ABP/N60B-DW1451	International	Series 4000, 7000, 8000	2001+	30" X 80"	One-piece encapsulated curved windshield
ABP/N60B-DW1383	International	I Series	2000+	30" X 82"	One-piece encapsulated curved windshield
ABP/N60B-DW1384	International	I Series	2000+	30" X 41"	Passenger side or RH encapsulated curved windshield
ABP/N60B-DW1385	International	I Series	2000+	30" X 41"	Driver side or LH encapsulated curved windshield
ABP/N60B-DL4717	Kenworth	Series C,W,T, Brute II	1983+	19" X 30"	RH/LH flat windshield
ABP/N60B-DW1139	Kenworth	Series C,T, Brute II	1991+	23" X 64"	One-piece curved windshield
ABP/N60B-DW1163	Kenworth	Series C,W,T, Brute II Cab and Aerocab	1991+	23" X 32"	Passenger side or RH curved windshield
ABP/N60B-DW1164	Kenworth	Series C,W,T, Brute II Cab and Aerocab	1991+	23" X 32"	Driver side or LH curved windshield
ABP/N60B-DW1310	Kenworth/Peterbilt	KW T2000, PB 387	2000+	29" X 84"	One-piece encapsulated curved windshield
ABP/N60B-DL2752	Mack	CA53, CA531, CA532, MR600	1979+	37" X 39"	RH/LH flat windshield
ABP/N60B-DW1080	Mack	Series CH, CL	1989+	25" X 41"	Passenger side or RH curved windshield
ABP/N60B-DW1081	Mack	Series CH, CL	1989+	25" X 41"	Driver side or LH curved windshield
ABP/N60B-DW1315	Mack	LE, LS, Cabover	1996+	37" X 42"	RH/LH flat windshield
ABP/N60B-DW662	Mack	Series CA, D, R, U	1965+	22" X 34"	Passenger side or RH curved windshield
ABP/N60B-DW663	Mack	Series CA, D, R, U	1965+	22" X 34"	Driver side or LH curved windshield
ABP/N60B-DW933	Mack	872 Midliner	1980+	29" X 74"	One-piece curved windshield
ABP/N60B-DW1000	FTL	FLN Business Class	All	85" X 42"	FLN Business Class Windshield

Alliance Part Numbers are continued on the other side

ALLIANCE PART NUMBERS (CONTINUED)					
Alliance Part Number	Make	Model	Year	Approximate Size (H X W)	Description
ABP/N60B-DW1036	Peterbilt	Series 200,300,330,335, 349,353,357,378,379,385	1987+	20" X 31"	Passenger side or RH encapsulated flat windshield
ABP/N60B-DW1037	Peterbilt	Series 200,300,330,335, 349,353,357,378,379,385	1987+	20" X 31"	Driver side or LH encapsulated flat windshield
ABP/N60B-DW1308	Volvo	VN Series	1997+	29" X 80"	One-piece curved windshield
ABP/N60B-DW865	Volvo	WX/Xpeditor 2 Series, WXLL/Xpeditor Low Eng.	1976+	30" X 44"	Passenger side or RH curved windshield
ABP/N60B-DW866	Volvo	WX/Xpeditor 2 Series, WXLL/Xpeditor Low Eng.	1976+	30" X 44"	Driver side or LH curved windshield
ABP/N60B-DW965	Volvo	Autocar AC, WG Series	1984+	28" X 44"	Passenger side or RH curved windshield
ABP/N60B-DW966	Volvo	Autocar AC, WG Series	1984+	28" X 44"	Driver side or LH curved windshield
ABP/N60B-DW1278	Western Star	Constellation Series	1996-2000	27" X 37"	Passenger side or RH curved windshield
ABP/N60B-DW1279	Western Star	Constellation Series	1996-2000	27" X 37"	Driver side or LH curved windshield
ABP/N60B-DW1440	Western Star	Constellation Series	2000+	28" X 37"	Passenger side or RH curved windshield
ABP/N60B-DW1441	Western Star	Constellation Series	2000+	28" X 37"	Driver side or LH curved windshield
ABP/N60B-DW931	Western Star	Conventional	1980+	23" X 31"	Passenger side or RH curved windshield
ABP/N60B-DW932	Western Star	Conventional	1980+	23" X 31"	Driver side or LH curved windshield

WARRANTY

Alliance parts are backed by a one-year unlimited mile warranty with coverage available throughout North America. This warranty does not cover parts that are damaged due to accident, improper installation, road hazards, fire, theft, misuse, modification or neglect.

WHEN YOU NEED MORE INFORMATION . . .

The literature listed below is available from your local dealer.

Catalog Number	Description
FLC/PSM-M-416	Countertop Reference Chart

Alliance All-Makes Mirrors by Cham-Cal

The Alliance All-Makes Mirror product line includes west coast, convex and fender mount mirror assemblies for the commercial vehicle market.



PART NUMBERS

West Coast Mirrors

Part Number	Description
ABP/N74B-20100	6" x 16" Mirror, Aluminum
ABP/N74B-20331	7" x 16" OEM Heated & Lighted Mirror, Stainless Steel
ABP/N74B-20101	6" x 16" Mirror, Stainless Steel
ABP/N74B-20111	6" x 16" Heated Mirror, Stainless Steel
ABP/N74B-20121	6" x 16" Lighted Mirror, Stainless Steel
ABP/N74B-20131	6" x 16" Heated & Lighted Mirror, Stainless Steel
ABP/N74B-21101	7" x 16" Motorized & Heated Mirror, Stainless Steel
ABP/N74B-21131	7" x 16" Motorized, Lighted & Heated Mirror, Stainless Steel
ABP/N74B-20200	6" x 16" Economy Mirror, Aluminum
ABP/N74B-20301	7" x 16" OEM Mirror, Stainless Steel
ABP/N74B-20311	7" x 16" OEM Heated Mirror, Stainless Steel
ABP/N74B-20321	7" x 16" OEM Lighted Mirror, Stainless Steel
ABP/N74B-20323	7" x 16" OEM Heated & Lighted Mirror, Painted Black
ABP/N74B-20601	7" x 16" Pyramid Back Mirror, Stainless Steel
ABP/N74B-20603	7" x 16" Pyramid Back Mirror, Painted Black

Spot Mirrors

ABP/N74B-10701	7 1/2" Convex Mirror, Stainless Steel
ABP/N74B-10801	8 1/2" Convex Mirror, Stainless Steel
ABP/N74B-12701	7 1/2" Convex Mirror, Offset Stud, Stainless Steel
ABP/N74B-12801	8 1/2" Convex Mirror, Offset Stud, Stainless Steel
ABP/N74B-10300	3 3/4" Round Stick-on Convex Mirror
ABP/N74B-10400	4" x 5 1/2" Rectangular Stick-on Mirror
ABP/N74B-10481	4" x 8" Over Door Convex Mirror, Stainless Steel
ABP/N74B-10501	5" Convex Mirror, Stainless Steel
ABP/N74B-10503	5" Convex Mirror, Painted Black
ABP/N74B-10504	5" Convex Mirror, Painted White
ABP/N74B-10601	6" Convex Mirror, Stainless Steel
ABP/N74B-10603	6" Convex Mirror, Painted Black
ABP/N74B-10604	6" Convex Mirror, Painted White
ABP/N74B-10703	7 1/2" Convex Mirror, Painted Black
ABP/N74B-10711	7 1/2" Convex Mirror, Heated, Stainless Steel

Hardware Bracketry

Part Number	Description
ABP/N74B-60111	Heavy Duty Tripod Assembly for 8.5" Convex Mirror, All Stainless Steel
ABP/N74B-40303	School Bus Fender Bracketry, Painted Black
ABP/N74B-60151	Shortened Tripod Assembly for 8.5" Convex Mirror, All Stainless Steel
ABP/N74B-60171	Hood Mount/Pod Assembly for 8.5" Convex Mirror, Stainless Steel
ABP/N74B-60121	Deluxe Hood or Fender Mount Assembly for 8.5" Convex Mirror, Stainless Steel
ABP/N74B-60601	West Coast Bracketry, Stainless Steel
ABP/N74B-70201	Universal Tube Mounting Kit for 3/4" Tube, Stainless Steel
ABP/N74B-70401	Convex Mirror "L" Bracket, Stainless Steel
ABP/N74B-70701	Safety Yoke, Stainless Steel
ABP/N74B-70711	Extra Wide Safety Yoke, Stainless Steel
ABP/N74B-70901	Clamp, 3/4" Tube, 3/8" Holes, Stainless Steel
ABP/N74B-70921	Clamp, 5/8" Tube, 1/4" Holes, Stainless Steel
ABP/N74B-70931	Clamp, 3/4" Tube, 1/4" Holes, Stainless Steel
ABP/N74B-70941	Clamp, 3/4" Tube, 3/8" Slot, Stainless Steel

THE ALLIANCE ALL-MAKES MIRROR PRODUCT LINE INCLUDES

- West Coast, Convex and Fender Mount Mirror Assemblies
- Hardware Bracketry

PRODUCT AVAILABILITY

To locate your nearest dealer, please visit www.freightliner.com.

FEATURES & BENEFITS

- Brightly finished stainless steel has corrosion resistance and added strength and durability.
- 8.5" Stainless Steel Convex mirror head is included.
- Assembly contains both curved and straight extension arms for improved vision into blind spots.
- Single pod-style hood mount fits attractively on most heavy and medium duty trucks.
- Kit includes backing plate, gasket, mounting hardware and instructions for easy installation.

WARRANTY

Alliance Parts are backed by a one-year unlimited mile warranty, with coverage available throughout North America.

WHEN PURCHASING ALLIANCE MIRRORS, CONSIDER THESE RELATED ITEMS:

Part Number	Description
ABP/N74B-60601	West Coast Bracketry, Stainless Steel
ABP/N74B-70201	Universal Tube Mounting Kit for 3/4" Tube, Stainless Steel
ABP/N74B-70401	Convex Mirror "L" Bracket, Stainless Steel
ABP/N74B-70701	Safety Yoke, Stainless Steel
ABP/N74B-70711	Extra-Wide Safety Yoke, Stainless Steel

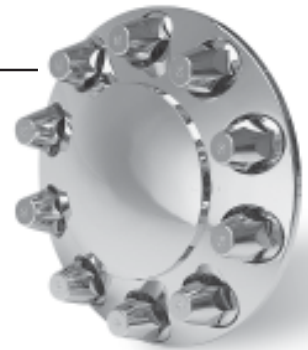
WHEN YOU NEED MORE INFORMATION...

The literature listed below is available from your local dealer.

Catalog Number	Description
CS/MC-C-PSM298(5/04PI)	2004 Alliance Truck Mirrors & Accessories

Alliance Chrome, ABS Front Hubcaps, and ABS Rear Axle Covers

The Alliance chrome product line includes all fast-moving chrome items—lug nut covers, hub caps, simulators, light panels, bumper guides, mud flap hangers, flap weights and more. Lug nut and wheel cover products are available in chrome, stainless steel and durable ABS plastic.



TOP SELLERS		CHROME PRODUCT	
ABS PRODUCT		CHROME PRODUCT	
Part Number	Description	Part Number	Description
DELUXE FRONT HUB CAP KITS WITH REMOVABLE CAP		HUB CAPS BLISTER PACKED	
ACX/40100	Includes 10 33mm chrome nut covers w/flange	ACX/41403	Front hub cap with 4 notches for hub piloted wheels
ACX/40110	Includes 10 33mm amber reflective nut covers w/flange	ACX/41503	Front hub cap with 5 notches for hub piloted wheels
ACX/40150	Includes 10 1½" chrome nut covers w/flange w/2 metal fasteners	ACX/41603	Front hub cap with 6 notches for hub piloted wheels
AXC/40160	Includes 10 1½" amber reflective nut covers w/flange and 2 metal fasteners	ACX/43403	Rear axle cover for Mack trucks over 44,000 lbs.
FRONT HUB CAP KITS WITHOUT REMOVABLE CAP		ACX/43103	Rear hub cap 7.25" diameter for ½" or 9/16" studs
ACX/40000	Includes 10 33mm chrome nut covers w/flange	ACX/43203	Rear hub cap 8.25" for 5/8" studs
ACX/40010	Includes 10 33mm amber reflective nut covers w/flange	ACX/43303	Rear hub cap 8.5" diameter for ¾" studs
ACX/40050	Includes 10 1½" chrome nut covers w/flange and 2 metal fasteners	ACX/41003	Standard front cap with 4 clips
ACX/40060	Includes 10 1½" amber reflective nut covers w/flange and 2 metal fasteners	ACX/42103	Trailer hub cap with 3 clips
DELUXE REAR AXLE COVER KITS WITH REMOVABLE CAP		NUT COVERS BLISTER PACKED	
ACX/40200	Includes 10 33mm chrome nut covers w/flange	ACX/84103	1½" Nut cover, blister pack of 10
ACX/40210	Includes 10 33mm amber reflective nut covers w/flange	ACX/84463	1½" x 2" Amber reflective nut cover, blister pack of 10
ACX/40250	Includes 10 1½" chrome nut covers w/flange and 2 metal fasteners	ACX/84483	1½" x 2" Blue reflective nut cover, blister pack of 10
ACX/40260	Includes 10 1½" amber reflective nut covers w/flange and 2 metal fasteners	ACX/84403	1½" x 2" Bullet nut cover, blister pack of 10
33MM NUT COVERS WITH LOCKING NUT FLANGE		ACX/84473	1½" x 2" Red reflective nut cover, blister pack of 10
ACX/39953	Chrome, threaded, blister pack of 10	ACX/84203	1¼" Nut cover for Dayton Wheel, blister pack of 10
ACX/39963	Amber reflective, threaded, blister pack of 10	ACX/84523	32mm Nut cover with flange, blister pack of 10
ACX/39973	Blue reflective, threaded, blister pack of 10	ACX/84533	33mm Nut cover with flange, blister pack of 10
ACX/39983	Purple reflective, threaded, blister pack of 10	ACX/84534	33mm Nut cover with flange, SS, blister pack of 10
ACX/39993	Red reflective, threaded, blister pack of 10	ACX/71506	Decorative bullet w/hardware, blister pack of 4

THE ALLIANCE CHROME PRODUCT LINE INCLUDES:

- Lug nut covers
- Front and rear hub caps
- Wheel and axle covers
- Beauty rings
- Simulators
- Mud flap holders
- Quarter fenders
- Bumper guides
- Top and bottom plates

WHEN PURCHASING ALLIANCE CHROME PRODUCTS, CONSIDER THESE RELATED PARTS:

Part Number	Description
ACX/39910	ABS front hub cap w/removable cap
ACX/39900	ABS front hub cap w/o removable cap
ACX/39920	ABS front replacement cap only for ACX/39901
ACX/39923	ABS front replacement cap only for ACX/39901, blister packed
ACX/39930	ABS rear axle cover w/removable cap and 10 hole ring
ACX/39940	ABS removable cap for ABS rear axle cover ACX/39930
ACX/39999	ABS nut cover hand tool for use w/all ABS products for easy installation
ACX/40099	Two metal fasteners for 1½" ABS

PRODUCT AVAILABILITY

To locate your nearest dealer, please visit www.freightliner.com.

FEATURES & BENEFITS

- ABS plastic is impact resistant, light weight and flexible.
- High-shine chrome finish never rusts.
- Hub covers have unique vent holes that dissipate wheel heat and protect against oil seal damage.
- Hub cap kits are available with removable caps for easy access to the hub.
- Wheel cover products fit all 11.25 bolt circle wheels.
- Fits 33mm and 1½" nut covers.

WHEN YOU NEED MORE INFORMATION...

The following literature is available to you at your local dealer:

Catalog Number	Description
AL/AC-V-001	Alliance Chrome Accessories Catalog

Alliance All-Makes Bumpers

*Industry-leading aftermarket selection and customization.
Short lead times. Great value.*



Bumper shown: ABP/N31-0CZ1001707
Freightliner Coronado

GENERAL PRODUCT INFORMATION

Alliance All-Makes Bumpers are manufactured in the USA, under strict quality standards. Our processes are designed around creating a custom bumper to meet each customer's needs.

- 133 truck models to choose from – the most selection of any aftermarket program.
- Choose from 99 different bumper styles, including Texas squares, boxed ends, deep tapers, American Eagles, set backs, set forwards, wrap-arounds and much more.
- We offer the most customization cutout options of anyone, including road light combinations, trend-setting light patterns and almost any logo cut into your bumper.
- With lead times of 7-10 days or less and expedited service available, you can be sure you will have your bumper when you need it.

PART NUMBERS

Alliance Part Number	Description	Truck Make and Model
ABP/N31-0CB001006	18" Texas Square with Tow Hole	Freightliner Classic 1984-1999
ABP/N31-0CB001002	16" Deep Taper with Tow Hole	Freightliner Classic 1984-1999
ABP/N31-0CL221015	14" Set Back Front Axle with 2 Fog Light Holes; Step and Tow Holes	Freightliner Century Class 1996-2004
ABP/N31-0CN201115	14" Set Back Front Axle with 2 Fog Light Holes; Tow and Vent Holes	Freightliner Pre-2004 Columbia
ABP/N31-0CN001115	14" Set Back Front Axle with Tow and Vent Holes	Freightliner Pre-2004 Columbia
ABP/N31-0CI211115	14" Set Back Front Axle with 2 Fog Light Holes; Step, Tow and Vent Holes	Freightliner FLD 112, 120
ABP/N31-0CI010115	14" Set Back Front Axle with Step, Vent Holes	Freightliner FLD 112, 120
ABP/N31-0CR022015	12" Set Back Axle with Center Step and Tow Holes	Freightliner Business Class
ABP/N31-0IC001006	18" Texas Square with Tow Hole	Western Star 4964
ABP/N31-0BA001002	16" Deep Taper with Tow Holes	Ford L/LN/LT/LTN/LTL
ABP/N31-0HC001006	18" Texas Square with Tow Hole	Peterbilt 379
ABP/N31-0HC001002	16" Deep Taper with Tow Hole	Peterbilt 379
ABP/N31-0FE001006	18" Texas Square with Tow Holes	Kenworth W900B, L
ABP/N31-0EP001115	13" Set Back Axle with Tow and Vent Holes	Navistar 9100,9200,9400
ABP/N31-0GJ221018	14" Set Forward Axle with 2 Fog Light Holes; Step and Tow Holes	Mack CH 1994-2004

FEATURES & BENEFITS

- 12 major truck makes to choose from
- 133 different truck models covered
- 99 bumper styles available
- Customize cutouts to just about anything you want

Steel Chrome

- 1-year warranty
- Taper and square bumpers available in 7 gauge (3/16") or 10 gauge (1/8") steel.
- 20" or larger bumpers and break-backs larger than 3" available in 10 gauge steel.

Steel Painted

- 1-year warranty
- Taper and square bumpers available in 7 gauge (3/16") or 10 gauge (1/8") steel
- 20" or larger bumpers and break-backs larger than 3" available in 10 gauge steel

Stainless Steel

- 5-year warranty
- Made from 11 gauge 304 stainless
- All styles are available in stainless except Coronado (-707)

ADDITIONAL INFORMATION

Where to go when you need more detailed information . . .

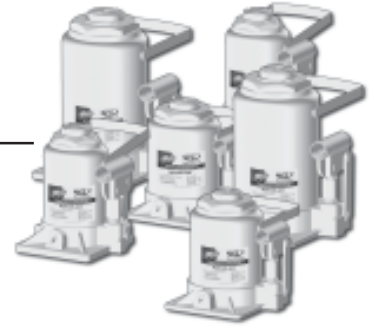
- Toll free dealer support (800) 354-0976
- Online bumper configuration tool – build your own custom bumper! alliancebrandparts.com
- Full print catalogs available.
To request catalogs, contact our catalog fulfillment partner, Co-Operations at:
Support@Co-Operations.com
or by phone (503) 620-7977.

To learn more about Alliance parts or to locate your nearest dealer, please visit alliancebrandparts.com.



Alliance Hydraulic Bottle Jacks

Professionally built for today's tough uses.



GENERAL PRODUCT INFORMATION

The Alliance Hydraulic Bottle jacks come in 12, 20 and 32 ton sizes with the option of choosing the low boy feature. They have an anodized finish to resist rusting, and have a low profile design for low ground clearance vehicles. The hydraulic bottle jacks provide quality and safety, as well as a sleek look.

PART NUMBERS

ABP/N795-23700	Hydraulic bottle jack, 12 ton
ABP/N795-23705	Hydraulic bottle jack, low boy 12 ton
ABP/N795-23710	Hydraulic bottle jack, 20 ton
ABP/N795-23715	Hydraulic bottle jack, low boy, 20 ton
ABP/N795-23720	Hydraulic bottle jack, 32 ton
ABP/N795-23725	Hydraulic bottle jack, low boy, 32 ton

FEATURES & BENEFITS

- Precision hydraulics for steady lift, ease of use, long life and safety
- Forged grooved head to help prevent slippage of load
- Extension screw for extra height, if needed
- Extended handle length for convenient use and storage
- Unit is compact, easy to store
- Heavy duty steel body for added strength
- Precision internal valve for even release
- Thick steel side plates for added strength
- Convenient carrying handle for easy lifting
- Two piece extra long handle
- Raises steadily
- Lowers steadily
- Easy to position
- Power painted for rust resistance

THE ALLIANCE HYDRAULIC BOTTLE JACKS PRODUCT LINE INCLUDES:

- 12 ton standard and low boy
- 20 ton standard and low boy
- 32 ton standard and low boy

WARRANTY

Alliance Parts are backed by a one-year unlimited mile warranty, with coverage available throughout North America.

PRODUCT AVAILABILITY

To locate your nearest dealer, please visit www.freightliner.com.

ADDITIONAL INFORMATION

To learn more about Alliance parts, please visit www.alliancebrandparts.com.

Alliance Mattresses

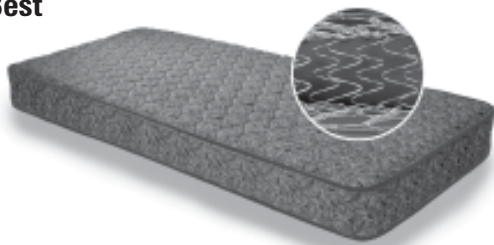
Alliance mattresses are available in four comfort levels. They are rolled and encased in plastic, then packaged in boxes for easy shipping, storage and installation.

Manufactured with the same stringent requirements as the vehicle original, these replacement mattresses are the best in the marketplace.



QIS - DELUXE DUAL-DENSITY QUILTED INNERSPRING MATTRESS

Best

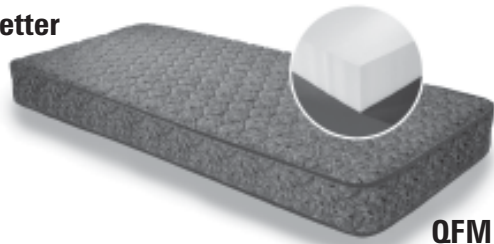


QIS Series

- Energy absorbing 8" thick innerspring mattress
- EVERFLEX® innerspring & polyurethane construction
- Reversible mattress for flexible comfort
- Plush 7" quilted top for ultimate comfort
- Deluxe upgraded navy and gray quilted "Trucker" fabric
- "Rolled and Boxed" Technology
- All materials meet MVSS-302
- Manufactured under strict ISO-9001 quality guidelines

QFM - DELUXE QUILTED DUAL-DENSITY FOAM MATTRESS

Better

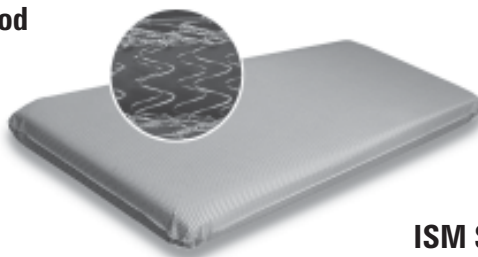


QFM Series

- 6" thick polyurethane core mattress
- Plush quilted top for ultimate comfort
- Deluxe upgraded navy and gray quilted "Trucker" fabric
- "Rolled and Boxed" Technology
- All materials meet MVSS-302
- Manufactured under strict ISO-9001 quality guidelines

ISM - STRIPED SMOOTH-TOP INNERSPRING MATTRESS

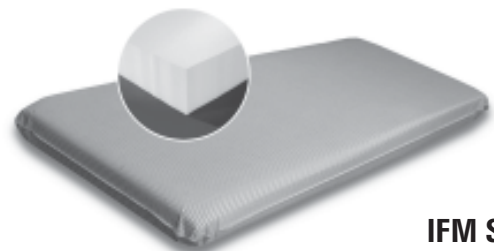
Good



ISM Series

- Energy-absorbing 6" thick smooth-top innerspring mattress
- EVERFLEX® Innerspring and polyurethane construction
- Radio Frequency (RF) welded technology—no sewn seams
- Gray and white striped smooth-top fabric
- "Rolled and Boxed" Technology
- All materials meet MVSS-302
- Manufactured under strict ISO-9001 quality guidelines

IFM - STRIPED SMOOTH-TOP FOAM MATTRESS



IFM Series

- 4" x 6" thick polyurethane core traditional foam truck mattress
- Radio Frequency (RF) welded technology—no sewn seams
- Gray and white striped smooth-top fabric
- "Rolled and Boxed" Technology
- All materials meet MVSS-302
- Manufactured under strict ISO-9001 quality guidelines

QIS SERIES			
DELUXE QUILTED INNERSPRING MATTRESS			
Part Number	Length x Width x Depth	Weight	Carton Size
ABP/N60C-7634S	76" x 34" x 7"	29 lbs.	16" x 16" x 35"
ABP/N60C-7636S	76" x 36" x 7"	32 lbs.	16" x 16" x 40"
ABP/N60C-7638S	76" x 38" x 7"	33 lbs.	16" x 16" x 40"
ABP/N60C-7832S	78" x 32" x 7"	31 lbs.	16" x 16" x 35"
ABP/N60C-7834S	78" x 34" x 7"	35 lbs.	16" x 16" x 35"
ABP/N60C-7836S	78" x 36" x 7"	33 lbs.	16" x 16" x 40"
ABP/N60C-7929S	79" x 29" x 7"	30 lbs.	16" x 16" x 30"
ABP/N60C-8023S	80" x 23" x 7"	31 lbs.	16" x 16" x 30"
ABP/N60C-8032S	80" x 32" x 7"	32 lbs.	16" x 16" x 35"
ABP/N60C-8034S	80" x 34" x 7"	32 lbs.	16" x 16" x 35"
ABP/N60C-8036S	80" x 36" x 7"	33 lbs.	16" x 16" x 40"
ABP/N60C-8038S	80" x 38" x 7"	37 lbs.	16" x 16" x 40"
ABP/N60C-8039S	80" x 39" x 7"	37 lbs.	16" x 16" x 40"
ABP/N60C-8042S	80" x 42" x 7"	39 lbs.	16" x 16" x 42"
ABP/N60C-8048S	80" x 48" x 7"	47 lbs.	16" x 16" x 50"
ABP/N60C-8050S	80" x 50" x 7"	48 lbs.	16" x 16" x 50"
ABP/N60C-8053S	80" x 53" x 7"	50 lbs.	16" x 16" x 54"
ABP/N60C-8535S	85" x 35" x 7"	34 lbs.	16" x 16" x 39"
ABP/N60C-8543S	85" x 43" x 7"	47 lbs.	16" x 16" x 42"

QFM SERIES			
DELUXE QUILTED FOAM MATTRESS			
Part Number	Length x Width x Depth	Weight	Carton Size
ABP/N60C-7524F	75" x 24" x 6"	15 lbs.	16" x 16" x 30"
ABP/N60C-7634F	76" x 34" x 6"	17 lbs.	16" x 16" x 35"
ABP/N60C-7636F	76" x 36" x 6"	17 lbs.	16" x 16" x 40"
ABP/N60C-7638F	76" x 38" x 6"	19 lbs.	16" x 16" x 40"
ABP/N60C-7832F	78" x 32" x 6"	16 lbs.	16" x 16" x 35"
ABP/N60C-7834F	78" x 34" x 6"	18 lbs.	16" x 16" x 35"
ABP/N60C-7836F	78" x 36" x 6"	19 lbs.	16" x 16" x 40"
ABP/N60C-7929F	79" x 29" x 6"	16 lbs.	16" x 16" x 30"
ABP/N60C-8023F	80" x 23" x 6"	15 lbs.	16" x 16" x 30"
ABP/N60C-8032F	80" x 32" x 6"	17 lbs.	16" x 16" x 35"
ABP/N60C-8034F	80" x 34" x 6"	18 lbs.	16" x 16" x 35"
ABP/N60C-8036F	80" x 36" x 6"	19 lbs.	16" x 16" x 40"
ABP/N60C-8038F	80" x 38" x 6"	20 lbs.	16" x 16" x 40"
ABP/N60C-8039F	80" x 39" x 6"	21 lbs.	16" x 16" x 40"
ABP/N60C-8042F	80" x 42" x 6"	22 lbs.	16" x 16" x 42"
ABP/N60C-8048F	80" x 48" x 6"	22 lbs.	16" x 16" x 50"
ABP/N60C-8050F	80" x 50" x 6"	24 lbs.	16" x 16" x 50"
ABP/N60C-8053F	80" x 53" x 6"	27 lbs.	16" x 16" x 54"
ABP/N60C-8535F	85" x 35" x 6"	22 lbs.	16" x 16" x 35"
ABP/N60C-8543F	85" x 43" x 6"	25 lbs.	16" x 16" x 42"

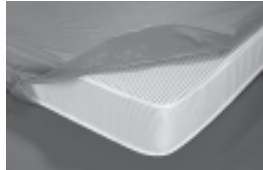
ISM SERIES			
STRIPED SMOOTH-TOP INNERSPRING MATTRESS			
Part Number	Length x Width x Depth	Weight	Carton Size
ABP/N60C-7836IS	78" x 36" x 6"	28 lbs.	16" x 16" x 35"
ABP/N60C-7929IS	79" x 29" x 5"	23 lbs.	16" x 16" x 30"
ABP/N60C-8034IS	80" x 34" x 6"	28 lbs.	16" x 16" x 35"
ABP/N60C-8036IS	80" x 36" x 6"	29 lbs.	16" x 16" x 40"
ABP/N60C-8039IS	80" x 39" x 6"	31 lbs.	16" x 16" x 40"

Notes: Mattress finished sizes are + or - 1". Shipping weights are approximate.

TPT SERIES			
ADD-ON PILLOW TOP			
Part Number	Length x Width x Depth	Weight	Carton Size
ABP/N60C-7929PT	79" x 29" x 2"	9 lbs.	16" x 16" x 30"
ABP/N60C-8034PT	80" x 34" x 2"	11 lbs.	16" x 16" x 30"
ABP/N60C-8039PT	80" x 39" x 2"	12 lbs.	16" x 16" x 30"
ABP/N60C-8042PT	80" x 42" x 2"	13 lbs.	16" x 16" x 30"

IFM SERIES			
STRIPED SMOOTH-TOP FOAM MATTRESS			
Part Number	Length x Width x Depth	Weight	Carton Size
ABP/N60C-7828IF	78" x 29" x 4"	13 lbs.	10" x 10" x 30"
ABP/N60C-7836IF	78" x 36" x 4"	16 lbs.	16" x 16" x 35"
ABP/N60C-8034IF	80" x 34" x 4"	15 lbs.	16" x 16" x 35"
ABP/N60C-8036IF	80" x 36" x 4"	17 lbs.	16" x 16" x 35"
ABP/N60C-8039IF	80" x 39" x 4"	19 lbs.	16" x 16" x 40"

VINYL ZIPPER MATTRESS COVERS			
Part Number	Length x Width x Depth	Weight	Carton Size
ABP/N60C-8032MC	32" x 80" x 7"	4 lbs.	8" x 8" x 30"
ABP/N60C-8034MC	34" x 80" x 7"	4 lbs.	8" x 8" x 30"
ABP/N60C-8039MC	39" x 80" x 7"	5 lbs.	8" x 8" x 30"



Vinyl zippered covers keep the mattress clean and looking new.

WHEN YOU NEED MORE INFORMATION...

The literature listed below is available from your local dealer.

Catalog Number	Description
PSM/MC-B-294	Brochure
FLC/PSM-F-347	Postcard
FLC/PSM-F-347	Poster

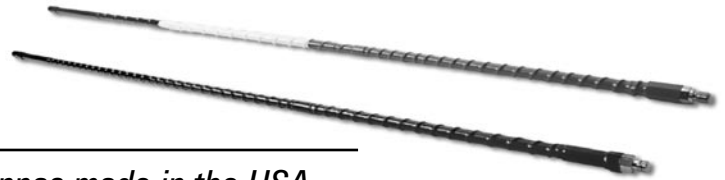
WARRANTY

Alliance Parts are backed by a one-year unlimited mile warranty, with coverage available throughout North America.

PRODUCT AVAILABILITY

To locate your nearest dealer, please visit www.freightliner.com.

Alliance Premium CB Antennas



Stay connected to the world with Alliance CB Antennas made in the USA.

GENERAL PRODUCT INFORMATION

Available in either black or white, the Alliance Premium CB antennas are made to please. They are spiral-wound, top loaded fiberglass with 20-gauge solid copper wire and are mechanically and electronically produced to reduce breakage. They feature a long filament, solid fiberglass rod (1/4" in diameter) and a long ferrule with standard 3/8" x 24" threads. These antennas provide quality, as well as great looks.

PRODUCT AVAILABILITY

To locate your nearest dealer, please visit www.daimler-trucksnorthamerica.com.

THE ALLIANCE PREMIUM CB ANTENNA PRODUCT LINE INCLUDES

- Single CB Mirror Mount Kits and Antennas
- Dual CB Mirror Mount Kits and Antennas
- AM/FM Antennas
- Super-Duty and Multi-band Antennas

WARRANTY

Alliance Parts are backed by a one-year unlimited mile warranty, with coverage available throughout North America. This warranty does not cover parts that are damaged due to accident, improper installation, road hazards, fire, theft, misuse, modification or neglect; products from which serial numbers have been removed; inadequate signal reception by the antenna; and cost of installation, removal or reinstallation.

PRODUCT FEATURES

Antenna Sticks

- Alliance antennas are pre-tuned "Superflex" replacement antennas.
- Alliance antennas are specifically designed to withstand breakage due to tough road conditions.
- Alliance antennas include Weatherband Frequency Trap for CBs with weatherband.
- Alliance antennas have a 3/4 wave, 1,000 watt rating.

Antenna Kits

- Alliance antenna kits are made with aluminum mirror mounts.
- Alliance antenna kits include mirror mounts, cables and hardware.
- Alliance antenna kits include Weatherband Frequency Trap for CBs with weatherband.
- Alliance antenna kits have a 3/4 wave, 1,000 watt rating.

INSTALLATION INSTRUCTIONS

If tuning is necessary, remove cap from the top of the antenna. Saw off the top of the antenna (cover, wire and rod) 1/8" from the top. Then, replace the cap and check SWR on channels 1 and 40. Repeat steps until SWR is about the same on channels 1 and 40.

TOP PART NUMBERS				
Part Number	Length	Description	Color	Tip Logo
STICKS				
ABP/N53-417	31"	AM/FM Antenna Polybagged only with Headercard	Chrome	N/A
ABP/N53-FSMS1	48"	Multiband Replacement Antenna	Black	Multiband
ABP/N53-SC1000	60"	Capacitive Hat Super-Duty CB Antenna	Black	N/A
ABP/N53-TSM3-FL	36"	1/4" CB Fiberglass Antenna with Weatherband	Black	Freightliner
ABP/N53-TSM3-ST	36"	1/4" CB Fiberglass Antenna with Weatherband	Black	Sterling
ABP/N53-TSM3-WS	36"	1/4" CB Fiberglass Antenna with Weatherband	Black	Western Star
ABP/N53-TSM3-W-FL	36"	1/4" CB Fiberglass Antenna with Weatherband	White	Freightliner
ABP/N53-TSM3-W-ST	36"	1/4" CB Fiberglass Antenna with Weatherband	White	Sterling
ABP/N53-TSM3-W-WS	36"	1/4" CB Fiberglass Antenna with Weatherband	White	Western Star
ABP/N53-TSM4-FL	48"	1/4" CB Fiberglass Antenna with Weatherband	Black	Freightliner
ABP/N53-TSM4-ST	48"	1/4" CB Fiberglass Antenna with Weatherband	Black	Sterling
ABP/N53-TSM4-WS	48"	1/4" CB Fiberglass Antenna with Weatherband	Black	Western Star
ABP/N53-TSM4-W-FL	48"	1/4" CB Fiberglass Antenna with Weatherband	White	Freightliner
ABP/N53-TSM4-W-ST	48"	1/4" CB Fiberglass Antenna with Weatherband	White	Sterling
ABP/N53-TSM4-W-WS	48"	1/4" CB Fiberglass Antenna with Weatherband	White	Western Star
ABP/N53-TSM2	24"	1/4" CB Fiberglass Antenna with Weatherband	Black	Alliance
ABP/N53-TSM2-W	24"	1/4" CB Fiberglass Antenna with Weatherband	White	Alliance
ABP/N53-TSM3	36"	1/4" CB Fiberglass Antenna with Weatherband	Black	Alliance
ABP/N53-TSM3-W	36"	1/4" CB Fiberglass Antenna with Weatherband	White	Alliance
ABP/N53-TSM4	48"	1/4" CB Fiberglass Antenna with Weatherband	Black	Alliance
ABP/N53-TSM4-W	48"	1/4" CB Fiberglass Antenna with Weatherband	White	Alliance
KITS				
ABP/N53-TSL3	36"	1/4" Single Mirror Mount Antenna Kit	Black	Alliance
ABP/N53-TSL3-W	36"	1/4" Single Mirror Mount Antenna Kit	White	Alliance
ABP/N53-TSL4	48"	1/4" Single Mirror Mount Antenna Kit	Black	Alliance
ABP/N53-TSL4-W	48"	1/4" Single Mirror Mount Antenna Kit	White	Alliance
ABP/N53-TTL4	48"	1/4" Dual Mirror Mount Kit Antenna Kit	Black	Alliance
ABP/N53-TTL4-W	48"	1/4" Dual Mirror Mount Kit Antenna Kit	White	Alliance

Alliance Premium Stainless Steel Truck Accessories

Adding class to Class 8 and offering you a great value for your dollar, the Alliance Premium Stainless Steel line includes custom designed and manufactured truck accessories using premium quality mirror finish **304 stainless steel** products.



GENERAL PRODUCT INFORMATION

Quality and satisfaction equals Alliance Premium Stainless Steel Truck Accessories. Our products are carefully selected to guarantee your satisfaction. We use only the highest grade of non-magnetic 304 stainless steel to manufacture the parts that have made Alliance a trusted name in the truck accessories business.

THE ALLIANCE PREMIUM STAINLESS STEEL PRODUCT LINE INCLUDES

- Battery and Toolbox Panels
- Bug, Door/Window, Hood, Grill and Wing Deflectors
- Headlight and Fender Guards
- Front and Rear Air Cleaner Light Bars
- Front, Top and Rear Fairing Panels
- Plates and Covers
- Cab Extended Visors
- Center Rear Light Boxes
- Universal Blind Mount Bumpers

PRODUCT AVAILABILITY

To locate your nearest dealer, please visit www.freightliner.com.

PART NUMBERS FOR FREIGHTLINER TRUCKS

Alliance Part Number	Description	UOM
ABP/FL-001	FLD-120/FLD-112 Below Light Fender Guards	PR
ABP/FL-002A	Classic Short Hood Headlight Fender Guard	PR
ABP/FL-002B	Classic XL Below Headlight Fender Guard	PR
ABP/FL-002C	Classic Short Hood Around Headlight Fender Guard	PR
ABP/FL-002D	Classic XL Around Headlight Fender Guard	PR
ABP/FL-002E	Severe Duty Headlight Fender Guard	PR
ABP/FL-009	FLD-112/FLD-120 Bumper Inserts	SET
ABP/FL-021	Glove Box Cover	EA
ABP/FL-024	Door Window Deflector - FLD-120, FLD-112	PR
ABP/FL-026A	Classic and Classic XL Bug Deflector	EA
ABP/FL-026C	Classic XL Grill Deflector	EA
ABP/FL-026D	FLD-120 Grill Deflector	PR
ABP/FL-027	Front Air Cleaner Light Bar	PR
ABP/FL-030	Battery Tool Box Panel	SET
ABP/FL-031	Bunk Vent Covers	PR
ABP/FL-036	Sleeper Extender Skirt Panel	PR
ABP/FL-037	FLD-112/FLD-120 Bug Deflector	EA
ABP/FL-060	Century Class Bug Deflector	EA
ABP/FL-062	Century Class/Columbia Sunvisor Insert	SET
ABP/FL-064	Double Headlight Visors	PR
ABP/FL-066	License Plate Holder - 2 Plate	EA
ABP/FL-073	Sunvisor Extension Strip	EA

PART NUMBERS FOR ALLIANCE UNIVERSAL BLIND MOUNT BUMPERS

Alliance Part Number	Description
ABP/DBP-2000	20" Blind Mount Bumper - Plain
ABP/DBP-2000S	20" Shell Only
ABP/DBP-2200	22" Blind Mount Bumper - Plain
ABP/DBP-2200S	22" Shell Only
ABP/DBP-2001	20" Blind Mount Bumper with X2G2 Light Holes
ABP/DBP-2001S	20" X2G2 Shell Only
ABP/DBP-2201	22" Blind Mount Bumper with X2G2 Light Holes
ABP/DBP-2201S	22" X2G2 Shell Only
ABP/DBP-2002	20" Blind Mount Bumper with 6" Oval Light Holes
ABP/DBP-2002S	20" Oval Light Hole Shell Only
ABP/DBP-2202	22" Blind Mount Bumper with 6" Oval Light Holes
ABP/DBP-2202S	22" Oval Light Hole Shell Only
ABP/DBP-2003	20" Blind Mount Bumper with 2" Round Light Holes
ABP/DBP-2003S	20" Round Light Hole Shell Only
ABP/DBP-2203	22" Blind Mount Bumper with 2" Round Light Holes
ABP/DBP-2203S	22" Round Light Hole Shell Only
ABP/DBP-1001	Upright Mount License Plate Holder - 1 Plate
ABP/DBP-1002	Upright Mount License Plate Holder - 2 Plates
ABP/DBP-1005	Bumper Foot Support Bracket

ADDITIONAL INFORMATION

To learn more about Alliance parts, please visit www.alliancebrandparts.com.

WHEN YOU NEED MORE INFORMATION...

The literature listed below is available from your local dealer.

Catalog Number	Description
FLC/PSM-M-204	Freightliner Premium Stainless Steel Catalog
FLC/PSM-B-206	Freightliner Premium Stainless Steel Brochure
FLC/PSM-F-418	Universal Blind Mount Bumper Brochure

FEATURES & BENEFITS

- Highest-grade non-magnetic 304 stainless steel
- Manufactured to approved original equipment specifications
- All parts are carefully quality controlled
- Parts are custom fit to each model
- Products are designed not to void any warranties
- Parts are laser cut, ensuring smooth and durable edges

WARRANTY

Alliance parts are backed by a one-year unlimited mile warranty, with coverage available throughout North America. This warranty does not cover parts that are damaged due to accident, improper installation, road hazards, fire, theft, misuse, modification or neglect.

Alliance Premium Stainless Steel Truck Accessories

*Adding class to Sterling Trucks and offering you a great value for your dollar, the Alliance Premium Stainless Steel line includes custom designed and manufactured truck accessories using premium quality mirror finish **304 stainless steel** products.*



GENERAL PRODUCT INFORMATION

Quality and satisfaction equals Alliance Premium Stainless Steel Truck Accessories. Our products are carefully selected to guarantee your satisfaction. We use only the highest grade of non-magnetic 304 stainless steel to manufacture the parts that have made Alliance a trusted name in the truck accessories business.

PRODUCT AVAILABILITY

To locate your nearest dealer, please visit www.freightliner.com.

THE ALLIANCE PREMIUM STAINLESS STEEL PRODUCT LINE INCLUDES

- Door Kick Plate
- Block Heater Hole Trim Plate
- Bug Deflector
- Sunvisor
- Sill/Scuff Plate
- Door Handle Trim
- Bumper Inserts
- Headlight Fender Guard

PART NUMBERS FOR STERLING TRUCKS

ALLIANCE PART NUMBER	PRODUCT	DESCRIPTION	UOM
ABP/DST-109	Door Kick Plate	Fits on the rocker panel, below doors. Fastens using two-sided tape. Sold in pairs.	PR
ABP/DST-085	Block Heater Hole Trim Plate	Covers surrounding area of the block heater hole. Fastens with two-sided tape and four bolts on block heater.	PR
ABP/DST-026	Bug Deflector	Constructed entirely of stainless steel, this bug deflector is extremely durable and attractive. Drilling on the hood is required. All hardware is included.	EA
ABP/DST-046	Sunvisor	Extra deep sunvisor, available for Acterra LT 7500 models. Designed to replace factory stainless visor. All hardware is included.	EA
ABP/DST-3420	Sill/Scuff Plate	Attaches using two-sided tape. Finished with non-slip grip tape on surface of panel.	PR
ABP/DST-106	Door Handle Trim	Protects the paint around the door handles. It easily mounts to the inset of the door handle with two-sided tape. Sold in pairs.	PR
ABP/DST-009	Bumper Inserts	Three-piece bumper inserts. Panels are fastened using two-sided tape. Panels are pretaped. No hardware is required.	SET
ABP/DST-044	Headlight Fender Guard	Protects paint from road debris and stone chips. Attaches using two-sided tape.	PR

FEATURES & BENEFITS

- Highest-grade non-magnetic stainless steel
- Manufactured to approved original equipment specifications
- Quality controlled
- Custom fit to each model
- Designed not to void any warranties
- Laser cut to ensure smooth and durable edges

WARRANTY

Alliance Parts are backed by a one-year unlimited mile warranty, with coverage available throughout North America. This warranty does not cover parts that are damaged due to accident, improper installation, road hazards, fire, theft, misuse, modification or neglect.

WHEN YOU NEED MORE INFORMATION...

The literature listed below is available from your local dealer.

Catalog Number	Description
FLC/PSM-M-232	Sterling Premium Stainless Steel Flyer

Alliance Premium Stainless Steel Truck Accessories

*Adding class to Class 8 and offering you a great value for your dollar, the Alliance Premium Stainless Steel line includes custom designed and manufactured truck accessories using premium quality mirror finish **304 stainless steel** products.*



GENERAL PRODUCT INFORMATION

Quality and satisfaction equals Alliance Premium Stainless Steel Truck Accessories. Our products are carefully selected to guarantee your satisfaction. We use only the highest grade of non-magnetic 304 stainless steel to manufacture the parts that have made Alliance a trusted name in the truck accessories business.

THE ALLIANCE PREMIUM STAINLESS STEEL PRODUCT LINE INCLUDES

- Battery and Toolbox Panels
- Bug, Door/Window, Grill and Wing Deflectors
- Headlight and Fender Guards
- Front and Rear Air Cleaner Light Bars
- Front, Top and Rear Fairing Panels
- Plates and Covers
- Cab and Sleeper Skirts
- Cab Extended Visors
- Center Rear Light Boxes
- Universal Blind Mount Bumpers

PRODUCT AVAILABILITY

To locate your nearest dealer, please visit www.freightliner.com.

PART NUMBERS FOR WESTERN STAR TRUCKS

Alliance Part Number	Description	UOM
ABP/WSC00-023	2000 and up Constellation 4964FX Front Air Cleaner Light Bar	PR
ABP/WSC00-024	2000 and up Constellation 4964FX Rear Air Cleaner Light Bar	PR
ABP/WSC00-042	2000 and up 4964 FX, EX, & SX Bug Deflector	EA
ABP/WSC00-054	4964EX, FX Below Headlight Fender Guard	PR
ABP/WSC00-083	High Visibility Hood Bug Deflector - 4964SX Model	EA
ABP/WSC00-084	High Visibility Hood Fender Guard - 4964SX Model	PR
ABP/WSC98-007	Double Headlight Visor	PR
ABP/WSC98-025	Headlight Fender Guards For 1998 and up Constellation	PR
ABP/WSS-023	Front Air Cleaner Light Bars - Heritage	PR
ABP/WSS-028	Vertical Grill Deflectors	PR
ABP/WSSBF-002	License Plate Holder - 2 Plate	EA
ABP/WSSC-071	Mud Flap Cover	PR
ABP/WSSC-079	Stainless Steel Emblem Accent	PR
ABP/WSSC-080	GladHand Bracket Trim	EA
ABP/WSSC-081	Constellation Rear Frame Panel	EA
ABP/WSSC-085	Park Brake Control Valve Trim Panel	EA
ABP/WSSC-086	Defrost Vent Deflector	PR
ABP/WSWH-023	Front Air Cleaner Light Bar Wiring Harness	PR
ABP/WSWH-024	Rear Air Cleaner Light Bar Wiring Harness	PR

PART NUMBERS FOR ALLIANCE UNIVERSAL BLIND MOUNT BUMPERS

Alliance Part Number	Description
ABP/DBP-2000	20" Blind Mount Bumper - Plain
ABP/DBP-2000S	20" Shell Only
ABP/DBP-2200	22" Blind Mount Bumper - Plain
ABP/DBP-2200S	22" Shell Only
ABP/DBP-2001	20" Blind Mount Bumper with X2G2 Light Holes
ABP/DBP-2001S	20" X2G2 Shell Only
ABP/DBP-2201	22" Blind Mount Bumper with X2G2 Light Holes
ABP/DBP-2201S	22" X2G2 Shell Only
ABP/DBP-2002	20" Blind Mount Bumper with 6" Oval Light Holes
ABP/DBP-2002S	20" Oval Light Hole Shell Only
ABP/DBP-2202	22" Blind Mount Bumper with 6" Oval Light Holes
ABP/DBP-2202S	22" Oval Light Hole Shell Only
ABP/DBP-2003	20" Blind Mount Bumper with 2" Round Light Holes
ABP/DBP-2003S	20" Round Light Hole Shell Only
ABP/DBP-2203	22" Blind Mount Bumper with 2" Round Light Holes
ABP/DBP-2203S	22" Round Light Hole Shell Only
ABP/DBP-1001	Upright Mount License Plate Holder - 1 Plate
ABP/DBP-1002	Upright Mount License Plate Holder - 2 Plates
ABP/DBP-1005	Bumper Foot Support Bracket

ADDITIONAL INFORMATION

To learn more about Alliance parts, please visit www.alliancebrandparts.com.

FEATURES & BENEFITS

- Highest-grade non-magnetic stainless steel
- Manufactured to approved original equipment specifications
- All parts are carefully quality controlled
- Parts are custom fit to each model
- Products are designed not to void any warranties
- Parts are laser cut, ensuring smooth and durable edges

WHEN YOU NEED MORE INFORMATION...

The literature listed below is available from your local dealer.

Catalog Number	Description
FLC/PSM-M-205	Western Star Premium Stainless Steel Catalog
FLC/PSM-B-207	Western Star Premium Stainless Steel Brochure
FLC/PSM-F-414	Universal Blind Mount Bumper Brochure

WARRANTY

Alliance parts are backed by a one-year unlimited mile warranty, with coverage available throughout North America. This warranty does not cover parts that are damaged due to accident, improper installation, road hazards, fire, theft, misuse, modification or neglect.

Alliance Service Kits and Bin Boxes

Alliance Service Kits include plastic seat covers and paper floor mats for the service department, and retail-type bags and bag hangers for the parts department. Alliance Bin Boxes are designed to provide an easy and inexpensive way to organize and display parts.



GENERAL PRODUCT INFORMATION

Alliance Service Kits

The seat covers and floor mats protect the "driver surfaces" during service. The parts bags provide added convenience when purchasing the parts.

Alliance Bin Boxes

Alliance Bin Boxes are made of high quality, corrugated material with the Alliance logo and a place for part number or bin location on the face. Available in four sizes, they will work in virtually any shop bin configuration.

PART NUMBERS

Alliance Part Number	Description
ABP/NSK-FLOORMAT	Floor mat
ABP/NSK-SEATCOVER	Seat cover
ABP/NSK-POLYBAG	Poly bag
ABP/NSK-POLYBAGHOOK	Bag hanger
ABP/4X12BB	4" x 12" Bin Box
ABP/6X12BB	6" x 12" Bin Box
ABP/8X12BB	8" x 12" Bin Box
ABP/12X12BB	12" x 12" Bin Box

ADDITIONAL INFORMATION

To learn more about Alliance parts, please visit www.alliancebrandparts.com.

FEATURES & BENEFITS

- Alliance Service Kits protect your investment
- Alliance Bin Boxes help organize your workspace

PRODUCT AVAILABILITY

To locate your nearest dealer, please visit www.freightliner.com.

Alliance Wiper Blades

The Alliance Wiper product line offers a complete line of high quality windshield wiper blades for heavy-duty truck applications. Alliance products offer competitive pricing and a great value for your dollar.



GENERAL PRODUCT INFORMATION

- Alliance are blades made with all steel
- Alliance blades have pinned frames for long lasting quiet performance
- Alliance blades meet or exceed SAE requirements
- Alliance offers a full range of winter blades
- Alliance offers a full range of designs to fit flat and curved glass applications

FEATURES & BENEFITS

- Alliance blades all have molded rubber wiping elements, an OE requirement
- Alliance blades are either stainless steel, or triple coated for superior corrosion resistance
- Alliance blades have built in connectors for E-Z application
- Winter blades reduce ice and snow buildup for best wipe in adverse weather
- Razor Sharp Edge assures streak free performance

COMPETITIVE CROSSOVER

Alliance Part Number	Anco Part Number	Trico Part Number
ABP/N82-7622	AND/31-22	TRI/22-1, TRI/22-4, TRI/22-9
ABP/N82-7322	AND/91-22	TRI/22-1, TRI/22-4, TRI/22-9
ABP/N82-7620	AND/31-20	TRI/20-1, TRI/20-4, TRI/20-9, TRI/20-2
ABP/N82-7320	AND/91-20	TRI/20-1, TRI/20-4, TRI/20-9, TRI/20-2
ABP/N82-7318	AND/91-18	TRI/18-1, TRI/8-2
ABP/N82-7618	AND/31-18	TRI/18-1, TRI/18-2
ABP/N82-7718	AND/57-18	TRI/63-18
ABP/N82-7113	AND/51-13	TRI/61-13
ABP/N82-7215	AND/52-15	TRI/63-15
ABP/N82-7218	AND/52-18	TRI/63-18
ABP/N82-7115	AND/51-15	TRI/61-15
ABP/N82-7324	AND/91-24	TRI/24-4

PRODUCT AVAILABILITY

To locate your nearest dealer, please visit www.freightliner.com.

WARRANTY

Alliance wiper blades are subject to consumption during their normal service life and are routinely replaced during normal maintenance services, and therefore are not covered under aftermarket parts warranty.

HIGH MOVERS (listed in order of popularity)	
Alliance Part Number	Description
ABP/N82-7622	22" Universal Wiper Blade
ABP/N82-7322	22" OEM Universal Wiper Blade
ABP/N82-7620	20" Universal Wiper Blade
ABP/N82-7320	20" OEM Universal Wiper Blade
ABP/N82-7318	18" OEM Universal Wiper Blade
ABP/N82-7618	18" Universal Wiper Blade
ABP/N82-7113	13" Narrow Stainless Steel Blade
ABP/N82-7216	16" H.D Wiper Blade
ABP/N82-7718	18" ½" Saddle Mount High Curve Wiper Blade
ABP/N82-7218	18" H.D Wiper Blade
ABP/N82-7115	15" Narrow Stainless Steel Blade
ABP/N82-7324	24" OEM Universal Wiper Blade
ABP/N82-7616	16" Universal Wiper Blade

WHEN YOU NEED ADDITIONAL INFORMATION...	
Catalog Number	Description
FLC/PSM-B-415	Alliance Application Guide
ABP/N82-A1118	Alliance Wiper Floor Display
<p>To learn more about Alliance parts, please visit www.alliancebrandparts.com.</p>	